

DWG. NO.	031-7734		
REVISIONS			
SYM.	E.C.N.	DATE	APVD.
A	23526	9/18/97	
	REVISED & REDRAWN		
B	24073	9/20/99	
	REVISED DIM "A"		
C	24951	10/17/02	
	NEW MOTOR		
D	25067	2/27/03	
	DELETED BRACKETS		

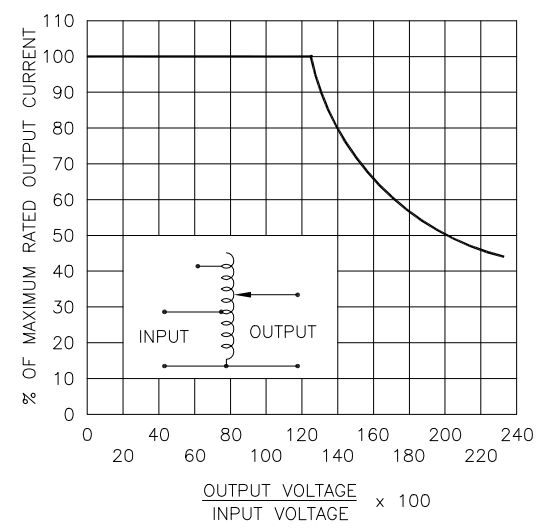
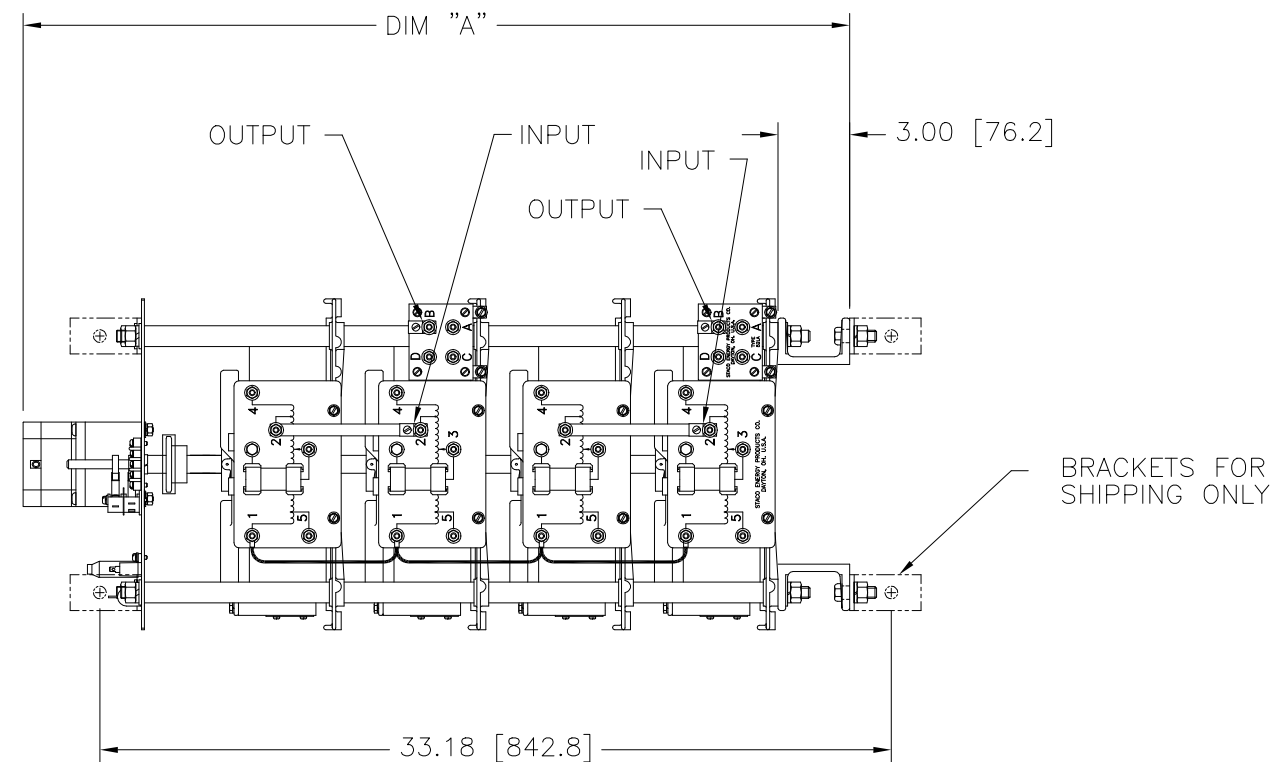
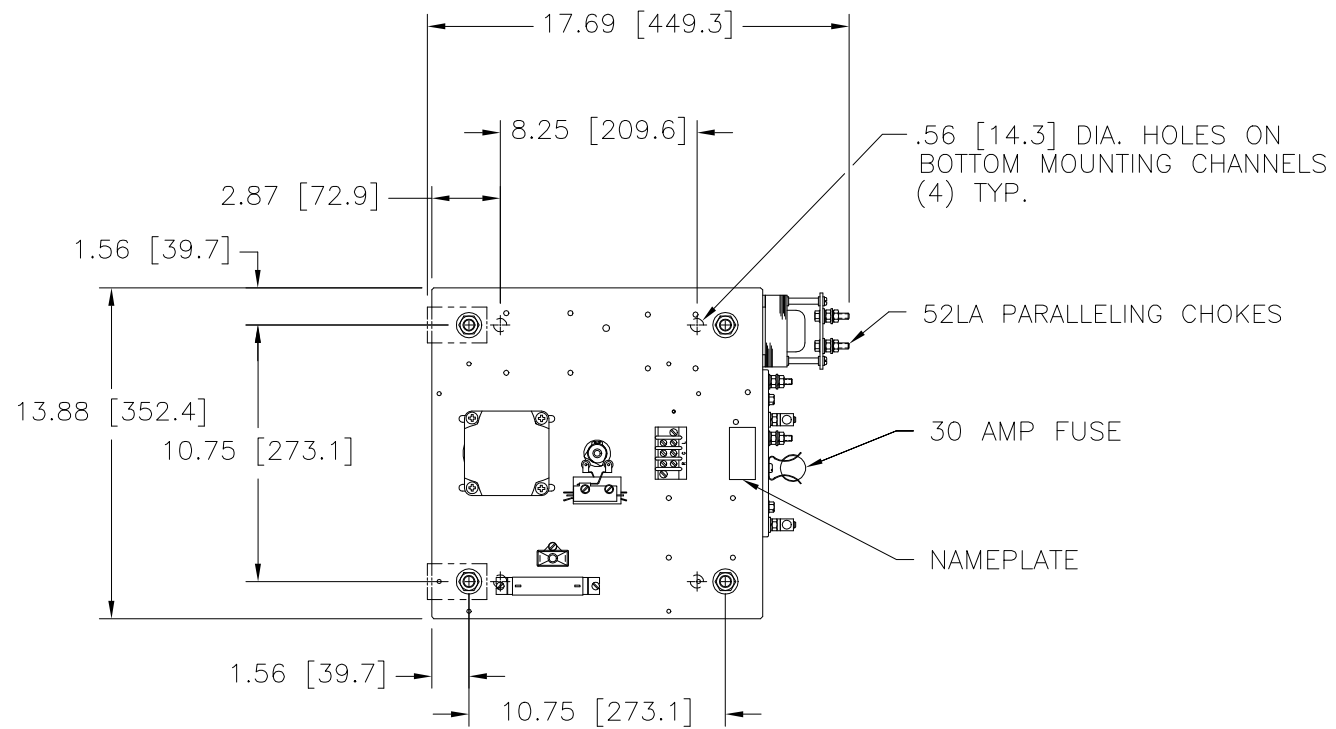
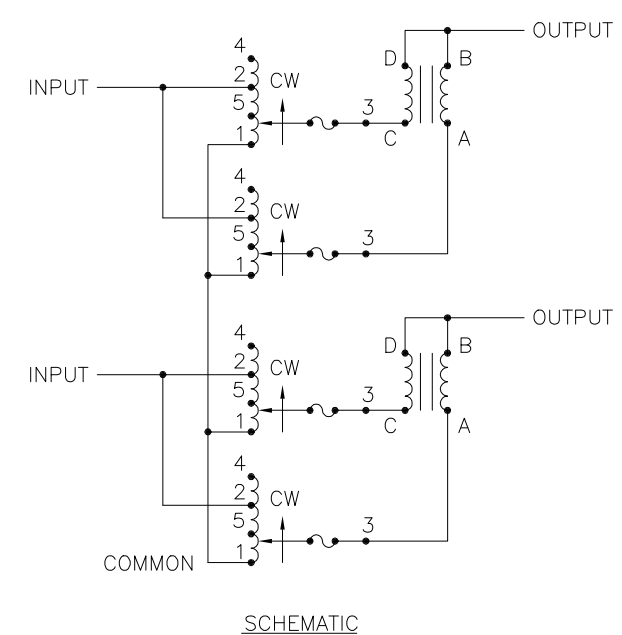
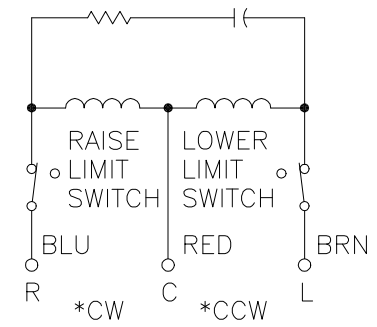


FIGURE A
MAXIMUM OUTPUT CURRENT OF ANY DUAL INPUT VOLTAGE OR VOLTAGE DOUBLER UNIT OPERATED AT LOWER INPUT VOLTAGE.



SCHEMATIC



120V, 50/60 HZ.
* ROTATION AS VIEWED FROM MOTOR END
SPEED: SEE CHART
MOTOR CIRCUIT

MAXIMUM OUTPUT CURRENT IN OUTPUT VOLTAGE RANGE FROM 0 TO 25 % ABOVE LINE VOLTAGE. AT HIGHER OUTPUT VOLTAGES, THE OUTPUT CURRENT MUST BE REDUCED ACCORDING TO THE RATING DERATING CURVE, FIGURE A.

+ MAXIMUM KVA AT MAXIMUM OUTPUT VOLTAGE AND CORRESPONDING DERATED OUTPUT CURRENT. MAXIMUM KVA FOR LOWER VOLTAGES MAY BE CALCULATED FROM RATING CURVE, FIGURE A.

V.D. = VOLTAGE DOUBLER.

WIRING	INPUT		OUTPUT			SHAFT ROTATION FOR VOLTAGE INCREASE	TERMINAL CONNECTIONS FOR INCREASING VOLTAGE AS VIEWED FROM TOP	
	VOLTS	HERTZ	VOLTS	CONSTANT CURRENT LOAD			INPUT	OUTPUT
				MAX. AMPS	MAX. KVA			
SINGLE PHASE SERIES PARALLEL	480	50/60	0-480	56	26.9	CW	4-4	B-B
			0-560	56	31.4	CW	2-2	B-B
	240	50/60	0-560	56#24 V.D.	13.5 +	CW	5-5	B-B

SPEED (SECONDS)	MODEL NUMBER	DIM "A"
5	5M5021E-4PS	33.43 [849.1]
15	15M5021E-4PS	34.64 [879.9]
30	30M5021E-4PS	34.64 [879.9]
60	60M5021E-4PS	34.64 [879.9]

UNLESS OTHERWISE SPECIFIED, TOLERANCE IS ± DECIMALS .XX HOLES .12 ANGLES DRAFT 1° UNITS IN [mm]

MATERIAL: ALL DIMENSIONS APPLY AFTER PLATING

TITLE: SPEC. CONTROL DRAWING
MOTORIZED VARIABLE XFMR.
TYPE: M5021-4PS

DRAWN BY: TIM RAU DATE: 9/10/97 FIRST USED ON: DO NOT SCALE DWG.
CHECKER: DATE: WEIGHT APPROX.: CAGE CODE: 83008
ENGINEER: DATE: SCALE: .25=1 SHEET 1 OF 1

STACO ENERGY PRODUCTS CO.
A Components Corporation of America Company
302 Gadsden Boulevard Dayton, Ohio 45403 USA

DWG. NO. 031-7734